



TALScoutsTM
GUIDING YOUTH TO SERVE

M A S T E R C L A S S

11 SUSTAINABLE CITIES
AND COMMUNITIES



Sustainable

Cities and Communities



11 SUSTAINABLE CITIES AND COMMUNITIES



Today, more than
880 million
people living
in slums
compared with
689 million in 1990





**Make cities and
human settlements
inclusive, safe,
resilient and
sustainable**





MAKE CITIES AND HUMAN SETTLEMENTS INCLUSIVE, SAFE, RESILIENT AND SUSTAINABLE

BEFORE COVID-19

SHARE OF URBAN POPULATION
LIVING IN SLUMS
ROSE TO 24% IN 2018



ONLY HALF
THE WORLD'S URBAN
POPULATION HAS
CONVENIENT ACCESS
TO PUBLIC TRANSPORT
(2019)



COVID-19 IMPLICATIONS



OVER 90%
OF COVID-19
CASES ARE IN
URBAN AREAS



AIR POLLUTION
CAUSED 4.2 MILLION
PREMATURE DEATHS
IN 2016



47% OF POPULATION LIVE WITHIN 400 METRES
WALKING DISTANCE TO OPEN PUBLIC SPACES



400M



MAKE CITIES AND HUMAN SETTLEMENTS INCLUSIVE, SAFE, RESILIENT AND SUSTAINABLE

THE PANDEMIC
HAS WORSENED THE PLIGHT OF
SLUM DWELLERS



THE MAJORITY OF THE MORE THAN
1 BILLION SLUM DWELLERS
RESIDE IN THREE REGIONS (2018)

EASTERN AND
SOUTH-EASTERN
ASIA

370 MILLION

SUB-
SAHARAN
AFRICA

238 MILLION

CENTRAL
AND SOUTHERN
ASIA

226 MILLION

16%

THE AVERAGE GLOBAL SHARE
OF URBAN AREA
ALLOCATED TO STREETS AND
OPEN PUBLIC SPACES (2020)



SHORT OF THE TARGET
OF 30% STREETS AND 10-15% OPEN PUBLIC SPACES

156 COUNTRIES HAVE DEVELOPED
NATIONAL URBAN POLICIES



BUT ONLY HALF ARE IN
THE IMPLEMENTATION STAGE

ONLY HALF OF THE WORLD'S URBAN POPULATION HAVE
CONVENIENT ACCESS TO PUBLIC TRANSPORT (2019)



500 METRES

500 METRES

1,000 METRES

CONVENIENT ACCESS MEANS RESIDING WITHIN
500 M WALKING DISTANCE OF A BUS STOP/LOW-CAPACITY TRANSPORT SYSTEM
AND 1000 M OF A RAILWAY OR FERRY TERMINAL



THE SUSTAINABLE DEVELOPMENT GOALS REPORT 2021: [UNSTATS.UN.ORG/SDGS/REPORT/2021/](https://unstats.un.org/sdgs/report/2021/)



TALScouts™
GUIDING YOUTH TO SERVE

MASTER CLASS





Facts and Figures

- [Half of humanity](#) – 3.5 billion people – lives in cities today and 5 billion people are projected to live in cities by 2030.
- [95 percent of urban expansion](#) in the next decades will take place in developing world
- [828 million people](#) live in slums today and most them are found in Eastern and South-Eastern Asia.
- The world's cities occupy just 3 percent of the Earth's land, but account for [60-80 per cent of energy consumption](#) and 75 per cent of carbon emissions.
- Rapid urbanization is exerting pressure on fresh water supplies, sewage, the living environment, and public health.
- Cities account for [between 60 and 80 percent](#) of energy consumption and generate as much as 70 percent of human-induced greenhouse gas emissions
- [90 per cent](#) of urban growth is forecasted to happen in Asia and Africa in the next 30 years.
- By 2050 [70 percent](#) of the world population is predicted to live in urban settlements.

Targets by 2030



TARGET 11-1



SAFE AND AFFORDABLE HOUSING

TARGET 11-2



AFFORDABLE AND SUSTAINABLE TRANSPORT SYSTEMS

TARGET 11-3



INCLUSIVE AND SUSTAINABLE URBANIZATION

TARGET 11-4



PROTECT THE WORLD'S CULTURAL AND NATURAL HERITAGE

TARGET 11-5



REDUCE THE ADVERSE EFFECTS OF NATURAL DISASTERS

TARGET 11-6



REDUCE THE ENVIRONMENTAL IMPACT OF CITIES

TARGET 11-7



PROVIDE ACCESS TO SAFE AND INCLUSIVE GREEN AND PUBLIC SPACES

TARGET 11-A



STRONG NATIONAL AND REGIONAL DEVELOPMENT PLANNING

TARGET 11-B



IMPLEMENT POLICIES FOR INCLUSION, RESOURCE EFFICIENCY AND DISASTER RISK REDUCTION

TARGET 11-C



SUPPORT LEAST DEVELOPED COUNTRIES IN SUSTAINABLE AND RESILIENT BUILDING





11.1 By 2030, ensure access for all to adequate, safe and affordable housing and basic services and upgrade slums

11.2 By 2030, provide access to safe, affordable, accessible and sustainable transport systems for all, improving road safety, notably by expanding public transport, with special attention to the needs of those in vulnerable situations, women, children, persons with disabilities and older persons

11.3 By 2030, enhance inclusive and sustainable urbanization and capacity for participatory, integrated and sustainable human settlement planning and management in all countries

11.4 Strengthen efforts to protect and safeguard the world's cultural and natural heritage

11.5 By 2030, significantly reduce the number of deaths and the number of people affected and substantially decrease the direct economic losses relative to global gross domestic product caused by disasters, including water-related disasters, with a focus on protecting the poor and people in vulnerable situations

11.6 By 2030, reduce the adverse per capita environmental impact of cities, including by paying special attention to air quality and municipal and other waste management

11.7 By 2030, provide universal access to safe, inclusive and accessible, green and public spaces, in particular for women and children, older persons and persons with disabilities

11.A Support positive economic, social and environmental links between urban, peri-urban and rural areas by strengthening national and regional development planning

11.B By 2020, substantially increase the number of cities and human settlements adopting and implementing integrated policies and plans towards inclusion, resource efficiency, mitigation and adaptation to climate change, resilience to disasters, and develop and implement, in line with the Sendai Framework for Disaster Risk Reduction 2015-2030, holistic disaster risk management at all levels

11.C Support least developed countries, including through financial and technical assistance, in building sustainable and resilient buildings utilizing local materials

SUSTAINABLE DEVELOPMENT GOALS

11 
Sustainable Cities and Communities
2015-2019
Output, Impact, Collaboration



1 OUT OF 4 URBAN RESIDENTS
LIVE IN SLUM-LIKE CONDITIONS (2018)



ONLY HALF (53%) OF URBAN RESIDENTS HAVE
CONVENIENT ACCESS TO PUBLIC TRANSPORT (2018)



9 OUT OF **10** URBAN
RESIDENTS
BREATHE POLLUTED AIR

150 COUNTRIES
HAVE DEVELOPED
NATIONAL URBAN
PLANS, WITH ALMOST
HALF OF THEM IN THE
IMPLEMENTATION
PHASE



Year	Publications (approx.)
1975	28,000
1980	24,000
1985	8,000
1990	7,000
1995	5,000
2000	4,000
2005	4,000
2010	4,000
2015	4,000

Chemical Group	Relative Activity Index (approx.)
Alkyl	28
Amino	22
Aryl	20
Carboxyl	20
Ester	20
Ether	18
Halogen	18
Hydroxyl	18
Ketone	18
Nitro	18
Sulfonate	15
Sulfone	15

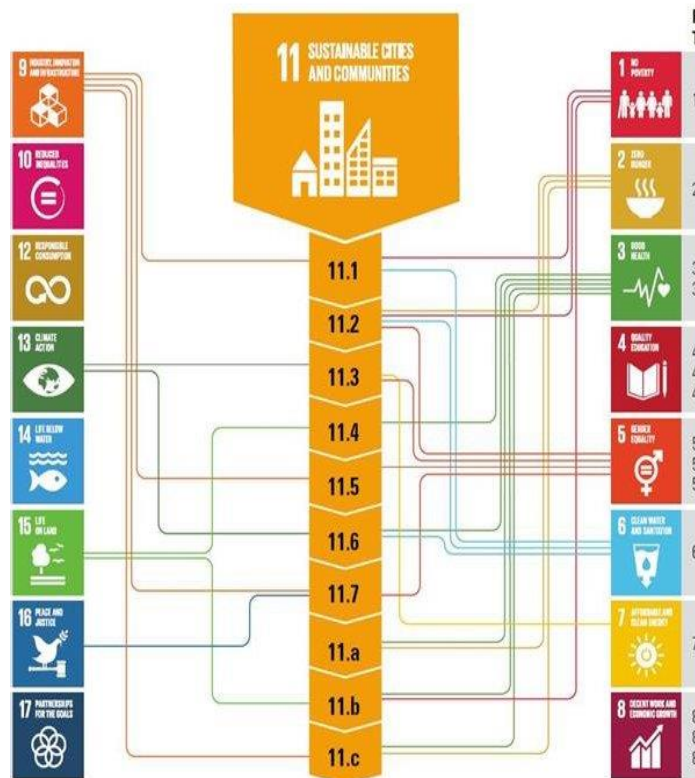
Year	Supporting S0611
2011	21,000
2012	26,000
2013	33,000
2014	37,000
2015	39,000

Income groups by location

High Income Locations Upper Middle Income Locations

Location	Green Segment (%)	Blue Segment (%)	Orange Segment (%)
High Income Locations	65	25	10
Upper Middle Income Locations	85	5	10

Country	Academic Collaboration
USA	9
UK	7
France	6.5
Germany	6
Italy	5.5
Spain	5.5
Japan	5.5
South Korea	5
India	4.5
China	4.5





How do we achieve the
#GlobalGoals by 2030?

-  Mobilize everyone, everywhere
-  Demand urgency and ambition
-  Design new innovations and solutions



SUSTAINABLE DEVELOPMENT GOALS

17 GOALS TO TRANSFORM OUR WORLD





Youth Philanthropy and Social Entrepreneurship Program

Empowering Young Leaders to Make Social Impact



Volunteering

+



Philanthropy

+



Entrepreneurship

=



Social Impact

Join TALScouts Now

