



TALScoutsTM
GUIDING YOUTH TO SERVE

M A S T E R C L A S S



Reduced Inequalities



10 REDUCED INEQUALITIES



THE PANDEMIC
IS LIKELY TO REVERSE PROGRESS
MADE IN REDUCING INCOME INEQUALITY
SINCE THE FINANCIAL CRISIS



COVID-19
ESTIMATED TO INCREASE THE AVERAGE GINI
FOR EMERGING MARKET AND DEVELOPING COUNTRIES
BY 6%



THE GINI INDEX MEASURES INCOME INEQUALITY AND RANGES FROM 0 TO 100, WHERE 0 INDICATES THAT INCOME IS SHARED EQUALLY AMONG ALL PEOPLE, AND 100 INDICATES THAT ONE PERSON ACCOUNTS FOR ALL INCOME.



THE PROPORTION OF THE GLOBAL
POPULATION WHO ARE REFUGEES
HAS MORE THAN DOUBLED SINCE 2010

FOR EVERY 100,000 PERSONS,
311 ARE REFUGEES (2020)

REMITTANCE COSTS
ARE AT AN ALL-TIME LOW AT 6.5% (2020)



FURTHER PROGRESS IS NEEDED
TO REACH THE 3% TARGET



IN 2020, 4,186 DEATHS AND DISAPPEARANCES
WERE RECORDED ON MIGRATORY ROUTES WORLDWIDE





10
REDUCED
INEQUALITIES

REDUCE INEQUALITY WITHIN AND AMONG COUNTRIES

BEFORE COVID-19

INCOME INEQUALITY WAS FALLING IN SOME COUNTRIES



GINI INDEX FELL
IN 38 OUT OF 84 COUNTRIES
(2010-2017)

THE GINI INDEX MEASURES INCOME INEQUALITY AND RANGES FROM 0 TO 100, WHERE 0 INDICATES THAT INCOME IS SHARED EQUALLY AMONG ALL PEOPLE, AND 100 INDICATES THAT ONE PERSON ACCOUNTS FOR ALL INCOME

GLOBAL RECESSION COULD SQUEEZE DEVELOPMENT AID TO DEVELOPING COUNTRIES



RESOURCE FLOWS FOR DEVELOPMENT

**\$420
BILLION**
(2017) → **\$271
BILLION**
(2018)

COVID-19 IMPLICATIONS

THE MOST VULNERABLE GROUPS ARE BEING HIT HARDEST BY THE PANDEMIC



OLDER PERSONS PERSONS WITH DISABILITIES CHILDREN WOMEN MIGRANTS AND REFUGEES



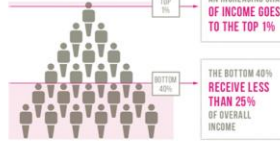
54% OF COUNTRIES WITH DATA HAVE A COMPREHENSIVE SET OF MIGRATION POLICIES



10
REDUCED
INEQUALITIES

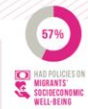
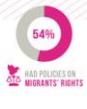
REDUCE INEQUALITY WITHIN AND AMONG COUNTRIES

IN MORE THAN HALF
OF THE 82 COUNTRIES WITH DATA,
**INCOME OF THE
BOTTOM 40%
OF THE POPULATION**
GREW FASTER THAN
THE NATIONAL AVERAGE
(2011-2016)



MOST COUNTRIES HAVE POLICIES TO FACILITATE SAFE AND ORDERLY MIGRATION, BUT MORE WORK REMAINS TO BE DONE TO PROTECT MIGRANTS' RIGHTS AND SOCIOECONOMIC WELL-BEING

OUT OF 105 COUNTRIES SURVEYED



**LDCs CONTINUE TO
BENEFIT FROM
PREFERENTIAL TRADE
STATUS**



66% OF PRODUCTS EXPORTED FROM LDCs RECEIVE DUTY-FREE TREATMENT (2017), COMPARED TO **51%** FOR DEVELOPING REGIONS





Reducing inequalities and ensuring no one is left behind are integral to achieving the Sustainable Development Goals.

COVID-19 has deepened existing inequalities, hitting the poorest and most vulnerable communities the hardest. It has put a spotlight on economic inequalities and fragile social safety nets that leave vulnerable communities to bear the brunt of the crisis. At the same time, social, political and economic inequalities have amplified the impacts of the pandemic.



10 REDUCED INEQUALITIES

Reduce inequality within and among countries

On average – and taking into account population size – income inequality increased by 11% in developing countries between 1990 and 2010



A significant majority of households in developing countries

more than 75%

are living today in societies where income is more unequally distributed than it was in the 1990s

children in the poorest 20% of population are still up to

3 TIMES MORE LIKELY to die before their fifth birthday than children in the richest quintiles



Social protection has been significantly extended globally, yet persons with disabilities are up to five times more likely than average to incur catastrophic health expenditures

Despite overall declines in maternal mortality in the majority of developing countries,

women in rural areas are still up to

3 TIMES MORE LIKELY to die while giving birth than women living in urban centres

Source : UN Sustainable Development Goals Factsheet 2015

INFOGRAPHICS BY



UNITED NATIONS
INFORMATION CENTRE



- Evidence from developing countries shows that **children in the poorest 20 percent** of the populations are still up to three times more likely to die before their fifth birthday than children in the richest quintiles.
- **Social protection** has been significantly extended globally, yet persons with disabilities are up to five times more likely than average to incur catastrophic health expenditures.
- Despite overall declines in **maternal mortality in most developing countries**, women in rural areas are still up to three times more likely to die while giving birth than women living in urban centers.
- **Up to 30 percent** of income inequality is due to inequality within households, including between women and men. Women are also more likely than men to live below 50 per cent of the median income
- Of the one billion population of persons with disabilities, **80 percent live in developing countries**.
- **One in ten** children is a child with a disability.
- Only **28 percent of persons** with significant disabilities have access to disability benefits globally, and only 1percent in low-income countries.





TARGET 10-1



REDUCE INCOME
INEQUALITIES

TARGET 10-2



PROMOTE UNIVERSAL
SOCIAL, ECONOMIC
AND POLITICAL
INCLUSION

TARGET 10-3



ENSURE EQUAL
OPPORTUNITIES AND
END DISCRIMINATION

TARGET 10-4



ADOPT FISCAL AND
SOCIAL POLICIES THAT
PROMOTES EQUALITY

TARGET 10-5



IMPROVED
REGULATION OF
GLOBAL FINANCIAL
MARKETS AND
INSTITUTIONS

TARGET 10-6



ENHANCED
REPRESENTATION
FOR DEVELOPING
COUNTRIES IN
FINANCIAL
INSTITUTIONS

TARGET 10-7



RESPONSIBLE AND
WELL-MANAGED
MIGRATION POLICIES

TARGET 10-A



SPECIAL AND
DIFFERENTIAL
TREATMENT FOR
DEVELOPING
COUNTRIES

TARGET 10-B



ENCOURAGE
DEVELOPMENT
ASSISTANCE AND
INVESTMENT IN LEAST
DEVELOPED
COUNTRIES

TARGET 10-C



REDUCE TRANSACTION
COSTS FOR MIGRANT
REMITTANCES





10.1 By 2030, progressively achieve and sustain income growth of the bottom 40 per cent of the population at a rate higher than the national average

10.2 By 2030, empower and promote the social, economic and political inclusion of all, irrespective of age, sex, disability, race, ethnicity, origin, religion or economic or other status

10.3 Ensure equal opportunity and reduce inequalities of outcome, including by eliminating discriminatory laws, policies and practices and promoting appropriate legislation, policies and action in this regard

10.4 Adopt policies, especially fiscal, wage and social protection policies, and progressively achieve greater equality

10.5 Improve the regulation and monitoring of global financial markets and institutions and strengthen the implementation of such regulations



10.6 Ensure enhanced representation and voice for developing countries in decision-making in global international economic and financial institutions in order to deliver more effective, credible, accountable and legitimate institutions



10.7 Facilitate orderly, safe, regular and responsible migration and mobility of people, including through the implementation of planned and well-managed migration policies

10.A Implement the principle of special and differential treatment for developing countries, in particular least developed countries, in accordance with World Trade Organization agreements

10.B Encourage official development assistance and financial flows, including foreign direct investment, to States where the need is greatest, in particular least developed countries, African countries, small island developing States and landlocked developing countries, in accordance with their national plans and programmes

10.C By 2030, reduce to less than 3 per cent the transaction costs of migrant remittances and eliminate remittance corridors with costs higher than 5 per cent





WOMEN'S EQUALITY DAY

| AUGUST 26TH



How do we achieve the
#GlobalGoals by 2030?

-  Mobilize everyone, everywhere
-  Demand urgency and ambition
-  Design new innovations and solutions



SUSTAINABLE DEVELOPMENT GOALS

17 GOALS TO TRANSFORM OUR WORLD





Youth Philanthropy and Social Entrepreneurship Program

Empowering Young Leaders to Make Social Impact



Volunteering

+



Philanthropy

+



Entrepreneurship

=



Social Impact

Join TALScouts Now

